

A331 EURO PROFILE MORTICE DEAD LOCK c/w 6 PIN CYLINDER, 3 KEYED & SECURITY ESCUTCHEON

Size: 64mm and 76mm



FIXING INSTRUCTIONS

(SUITABLE FOR DOOR THICKNESS OF 44 - 52mm)

Please read these instructions before your start:

Determine the lock height on door. Using the template overleaf, mark a HEIGHT LINE lightly on the edge and face of the door. Mark the position of the 2 lock case fixing screws and centres of the 4 20mm holes to be drilled for the mortice. (Fig 1)

Using the template, fold around edge of door and mark out and drill the cylinder and escutcheon fixing holes. (Fig 2)

Drill and chisel lock case mortice deep enough to allow the lock case to be under flush to the door edge. (Fig. 2) DO NOT HAMMER THE LOCK CASE INTO THE MORTICE AND ENSURE THAT NO WOOD CHIPS ENTER THE LOCK CASE.

Screw the lock case into position. (Fig 3)

To fit the cylinder, rotate the key so that the cam is within the cylinder body. Insert the cylinder into the lock. (Fig 3) Secure with the long screw. Ensure that the cylinder tightens onto the lock case and not the hole in the door. (Fig 4)

Using the screws provided fit the security escutcheon with screws visible to the inside surface of the door. Shorten the fixing screws, if necessary, to ensure a tight fit. Check for smooth operation of lock with escutcheon fitted, from both sides. To complete the lock fitting, screw on the lock faceplate and check again. (Fig 4)

Determine position of the box striking plate on the frame by transferring the HEIGHT LINE across from the door to the frame.

Using the template overleaf, mark the position of the fixing holes and the 3 20mm holes to be drilled for the striking plate mortice. Mortice the frame and fit the striking plate using the 4 fixing screws provided. (Fig 5) Check that the lock works easily.

WARNING:

Suitable eye protection should be worn if using power tools or other potentially hazardous equipment.

Note:

The lock conforms to BS3621:2007 only when fitted with the cylinder, security escutcheon, striking plate and fixing screws provided here.

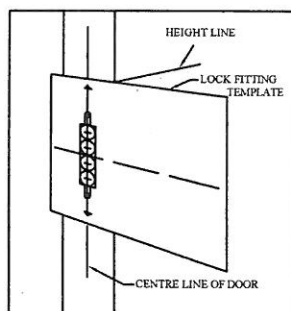


Fig 1

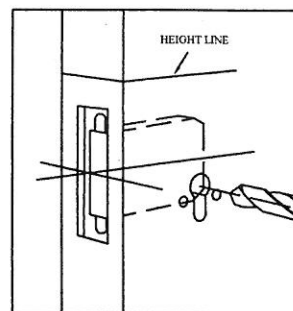


Fig 2

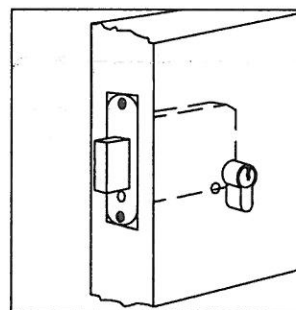


Fig 3

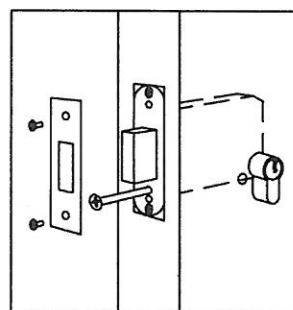


Fig 4

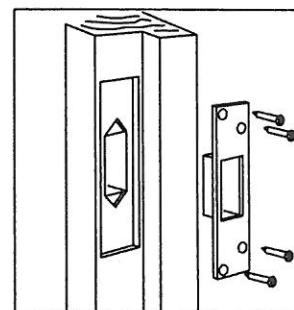


Fig 5



BS 3621:2007
Lic. No. KM 36692

BS EN 12209:2003 CLASSIFICATION

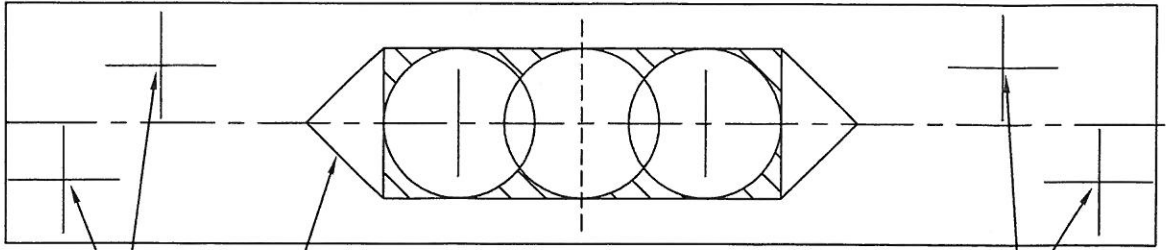


Aegis
Security House
10 Pascal Street
London
SW8 4SH

Tel: 020 7622 5151
Fax: 020 7498 2461



FRAME
REBATE



DRILL 3 HOLES 20mm diameter

Fixing screw
centres

Flange relief

Fixing screw
centres

BOX STRIKING PLATE MORTISE

FOLD AROUND DOOR EDGE TO MARK CYLINDER HOLES **76mm lock**

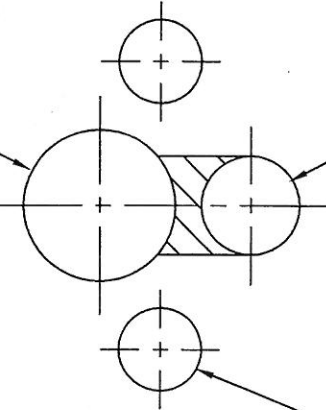
FOLD AROUND DOOR EDGE TO MARK CYLINDER HOLES **64mm lock**

HEIGHT LINE

LOCK FITTING TEMPLATE FOR USE WITH 64mm & 76mm DEADLOCKS

Euro-profile cylinder
and escutcheon holes

Drill 20mm dia.



Drill 13mm dia.

Drill 2 holes 11mm dia.

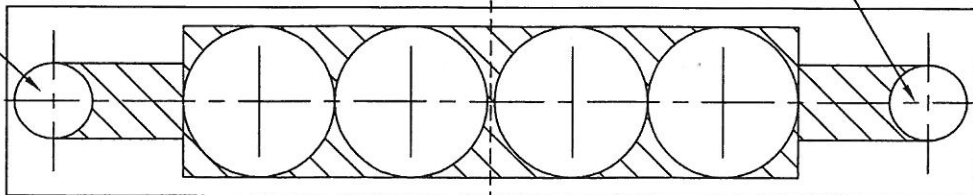
FOLD AROUND DOOR EDGE TO MARK CYLINDER HOLES **64mm lock**

FOLD AROUND DOOR EDGE TO MARK CYLINDER HOLES **76mm lock**

LOCK CASE MORTISE

CENTRE LINE
OF DOOR

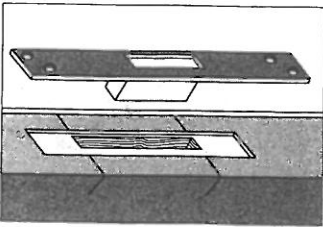
Fixing screw
centre



Fixing screw
centre

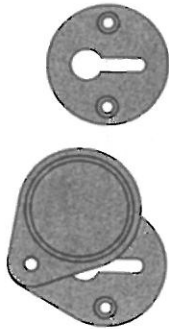
CENTRE LINE
OF DOOR

DRILL 4 HOLES 20mm diameter



- Mark the position of the box striker centrally on the door frame allowing equal clearance above and below the upper and lower marks. Cut out the frame to receive the striker. Fit striker checking lock functions correctly prior to fixing with screws provided.

- Fit keyhole escutcheons.

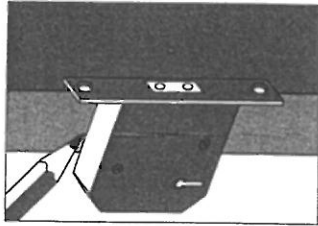


Covered external

Internal

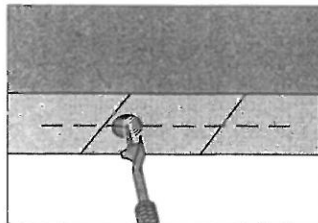
Fixing Instructions for 5 Lever Security Mortice Deadlock BS 3621

Note : This lock body is protected by hardened steel, therefore no anti-drill plates are required.

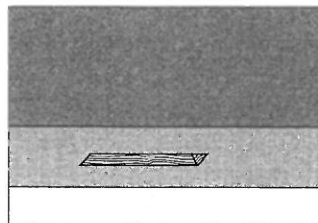


- Positioning the lock as near mid-height of the door as possible, hold the lock against the door edge and mark the top and bottom.

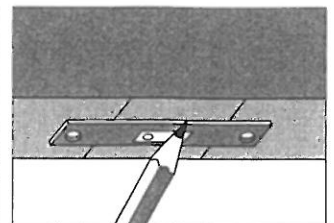
- Between these two lines mark a central vertical line (shown dotted). Along this vertical line drill a series of $\frac{1}{8}$ " dia. (16mm) holes a little deeper than the lock depth.



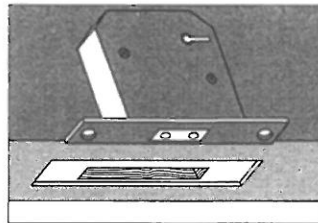
- Chisel out remaining wood to make a rectangular mortice, squaring up top and bottom edges.



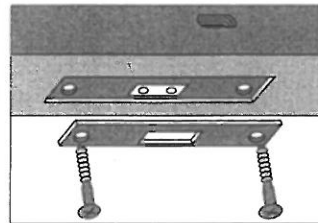
- Insert the lock body into the mortice and mark around the forend on the door edge. Chisel a recess to accommodate the depth of the lock forend and faceplate.



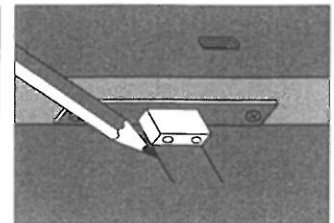
- Holding the lock against the face of the door, ensuring the faceplate is flush with the door edge and in line with the forend recess, mark the position of the keyhole. Drill and cut both sides of the door for the key. Fit lock loosely into the door making sure that the key passes freely into the lock.



- With the faceplate in position, secure the lock into the door through the faceplate with the screws provided. Test to ensure lock operates correctly.



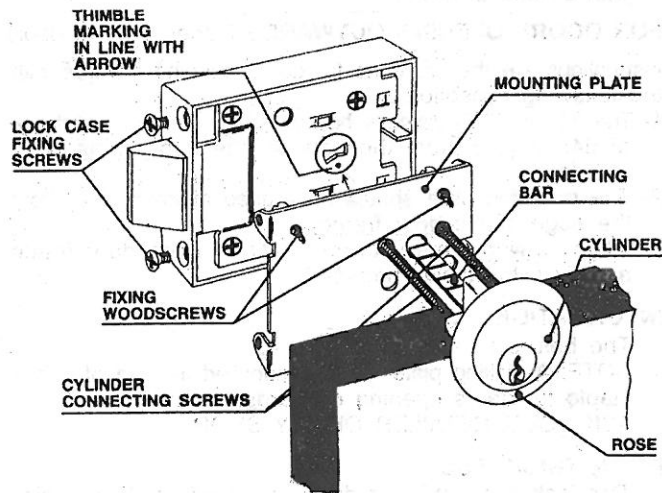
- With the door open and the deadbolt in the locked position, close the door gently against the frame. Mark the positions of the top and bottom of the deadbolt on the frame.



DEAD LOCKING

CYLINDER RIM NIGHTLATCH

Fixing Instructions

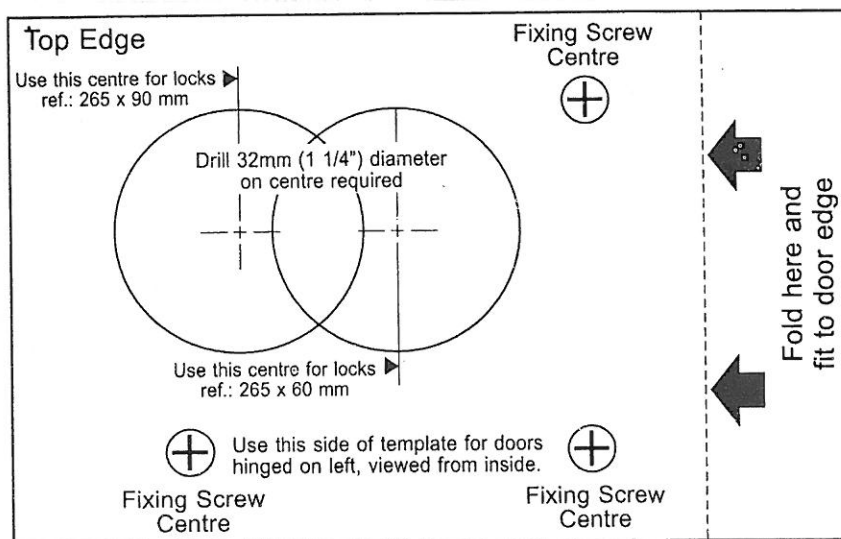


PREPARE DOOR

At the desired height, bore a 32mm (1¼") diameter hole through the door, with the centre of the hole 60mm (2⅜") from the edge of the door.

PREPARE CYLINDER

- 1- Remove key, insert cylinder through rose and place in position in the door.
- 2- If the door thickness is less than 50mm (2"), shorten the connecting bar leaving a projection from the inside of the door of not less than 15mm (⅝").
- 3- If necessary, shorten the connecting bar by gripping the end, steadying the cylinder and sawing through the bar using a fine tooth hacksaw.
- 4- With doors less than 45mm (1¾") thick, it will also be necessary to shorten the connecting screws.



FITTING TO DOOR

- 1- With key removed, insert cylinder through rose and door. Secure cylinder to mounting plate with connecting screws inserted through the top pair of holes and with the central projection of the mounting plate aligned 3mm ($\frac{1}{8}$ ") from the edge of the door. **DO NOT OVER TIGHTEN AS THIS WILL DISTORT THE MOUNTING PLATE.**
- 2- Secure mounting plate to door with fixing wood screws as shown.
- 3- Align the two arrows, SEEN (back of lock case). Place case over mounting plate, ensuring that the connecting bar enters slot in thimble. Slide case into final position with lugs engaging in slots of case. Secure the lock case fixing screws.
- 4- Close door and use lock case as guide, mark position of staple on door frame. Mortice door frame and fix staple with screws provided.

FOR DOORS OPENING OUTWARDS (either hand of door)

Instructions are the same as for doors opening inwards with the following exceptions:

- 1- The 32mm ($1\frac{1}{4}$ ") diameter hole must be bored at a distance of 64mm ($2\frac{1}{2}$ ") from the edge of the door frame **NOT** the door.
- 2- The mounting plate should be aligned at 8mm ($\frac{5}{16}$ ") from the edge of the door frame.
- 3- Align striking plate with lock bolt. Mortice door frame and fix with screws provided.

INFORMATION

The bolt is reversible.

NOTE: A striking plate can be supplied instead of a box staple for doors opening outwards.

ASK YOUR RETAILER OR DIY SHOP.

DOOR THICKNESS

This lock is suitable for doors up to 57mm ($2\frac{1}{4}$ ") thick or 54mm ($2\frac{1}{8}$ ") with cylinder pull.

OPERATION

The latch bolt may be deadlocked or held in withdrawn position by means of the slide knob.

Insert key in cylinder and turn it to right withdraws latch bolt. To bring in deadlocking action turn key 360° to left and withdraw it. Latch is now deadlocked.

CARE OF YOUR CYLINDER AND LOCK BACKCASE CYLINDER

Do NOT take cylinder apart. Do NOT oil or paint cylinder. To lubricate use graphite or similar non congealing product. Do not allow door to close with the snib deadlocking the latchbolt in the latched position.

BACKCASE OF LOCK

Moving parts must be kept greased.