

### FITTING THE LOCK

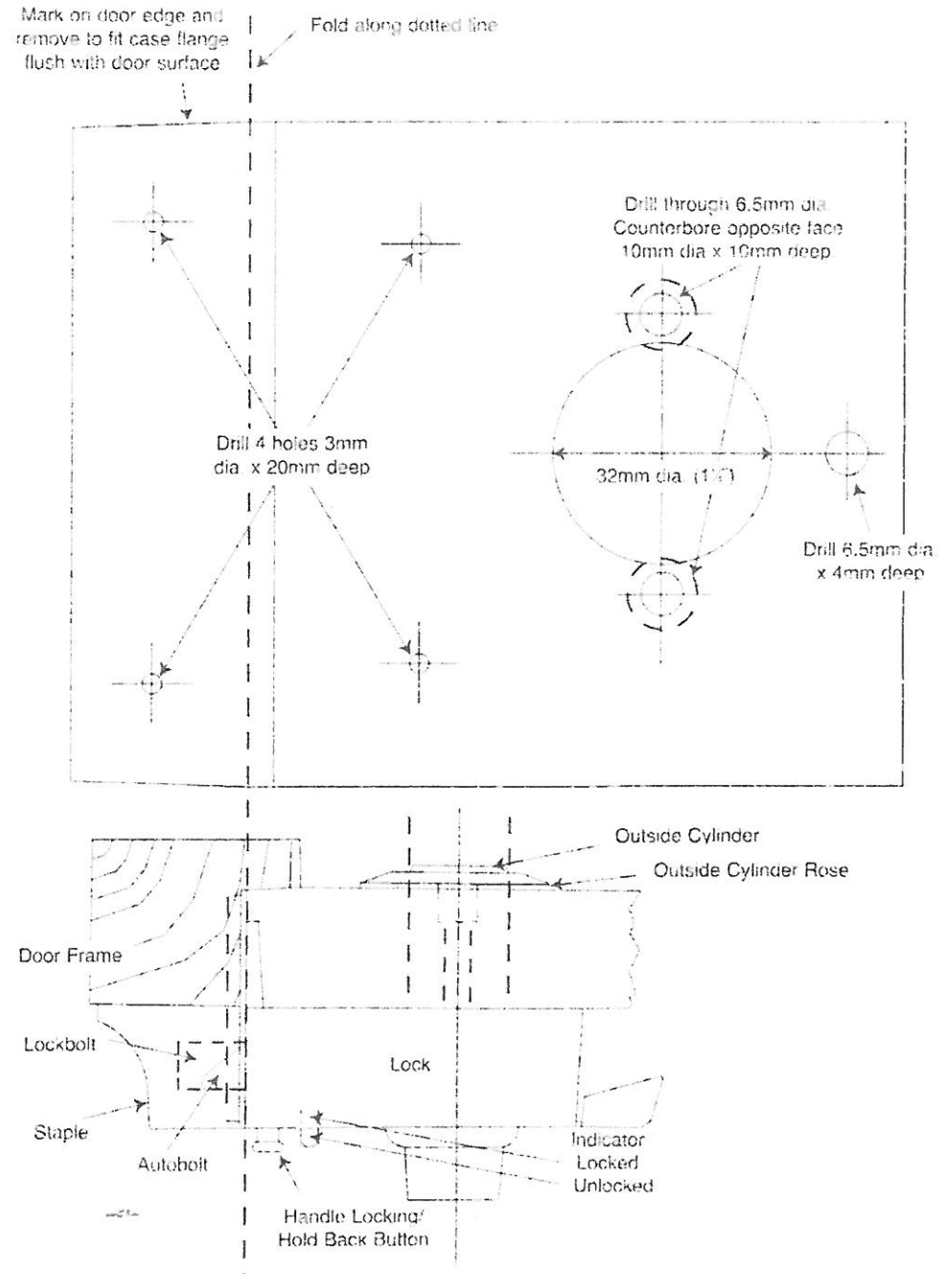
1. Fold the template along the dotted line and place on the door at the height that the lock is to be fitted taking care to avoid doors joints.
2. Mark the hole centres and the lock face plate from the template.
3. Remove the template and drill the holes as shown on the template taking care to counter-bore for the outside rose fixing bosses before drilling the 32mm (1 1/4") diameter cylinder hole.
4. Recess the edge of the door to accept the lock face plate so that the lock lies flat on the door face and the front of the lock aligns with the door edge.
5. Fit the mounting plate and outside rose using the screws provided.
6. Offer the lock to the door ensuring that the cylinder connecting bar enters the lock thimble and loosely fit the lock to the mounting place using the two metal thread screws.
7. Lift the handle, insert a screw driver through the cut-out in the handle and engage the captive screw within the case. Tighten the screw to secure the rear of the lock case to the mounting plate.
8. Tighten the metal thread screws to secure the front of the case to the mounting plate and proceed to fit the two wood screws to secure the lock face plate to the door.

### FITTING THE STAPLE

1. With the door closed, mark the top and bottom of the lock on the door frame.
2. Place the staple on the door frame with the box part aligned with the marks made from the lock, mark the wood screw centres and scribe around the staple face plate.
3. Drill 3.50mm diameter x 35mm deep at the screw hole positions and proceed to let-in the face plate flush with the door frame.
4. Fix the staple into position with the screws provided.

**LUBRICATION: Cylinder - RS 251- 3794 Dry Lubricant  
Deadlatch - Grease sparingly.**

## BANHAM FIXING INSTRUCTIONS SECURITY DOUBLE CYLINDER AUTOMATIC DEADLOCKING RIM DEADLATCH



## BANHAM L2000 (MARK II) SECURITY DOUBLE CYLINDER AUTOMATIC DEADLOCKING DEADLATCH

### To open the door from the inside.

Lift the handle at the rear of the case to withdraw the lockbolt and move the door in the opening direction.

Continue to hold the handle in the lifted position whilst opening the door until the autobolt projects and the lockbolt is held in the withdrawn position.

Closing the door will automatically release the lock bolt and secure the door in the closed condition.

### To lock the handle when vacating the premises.

1. Open the door.
2. Insert the key in the inside cylinder and rotate to the stop.
3. Return the key to the central position and remove.

The handle will now be locked against movement and closing the door will automatically release the lockbolt to secure the door whilst leaving the handle in this locked condition.

### To lock the handle when inside the premises

With the door in the closed position, push the button on the face of the lock into the lock to its fullest extent.

The handle will now be locked against movement until the button is pulled out or the door is opened by key from the outside.

### To open the door from the outside.

Insert the key in the outside cylinder and rotate to the stop. Move the door in the opening direction whilst holding the bolt in the withdrawn position with the key until the autobolt projects and the lockbolt is held in the withdrawn position. Closing the door will automatically release the lockbolt and secure the door in the locked condition.

*It should be noted that this lock has a safety feature whereby the action of re-entering the premises will automatically release the locked inside handle thereby returning the lock to normal operation.*

### To hold the bolt in the withdrawn position

1. Lift the handle to withdraw the bolt.
2. Push on the button whilst pushing the bolt into the case until the button enters a small amount into the lock

The bolt will now be held in the withdraw position until the button is pulled out.

### Indicator Mechanism

To provide awareness of the state of security this product is fitted with an indicator that provides a simple but effective indication of the state of locking.

For maximum security the indicator must be flush with the surface of the lock when the door is closed. This shows that the lockbolt has fully thrown and the deadlocking mechanism is fully in place. If this is not so, examine the staple box to ensure that it is clear of obstructions and if necessary reposition the staple to ensure freedom for the bolt to enter.

It should be noted that this product has a secondary standby position whereby the deadlocking can take place when the bolt has thrown half way. This will be indicated by the indicator projecting half the full amount. Whilst this provides a degree of security the above procedures should be followed to achieve maximum security.



**BANHAM PATENT LOCKS LIMITED**

Registered Office  
233-235 Kensington High Street, London W8 6SF  
Tel: 020 7622 5151